

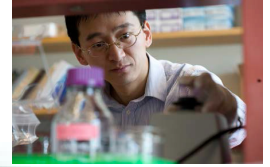
# The Yale Program in Integrative Cell Signaling and Neurobiology of Metabolism (ICSNM) 2012-2013 Speakers

October 2, 2012



**James Granneman, PhD**  
Professor, Wayne State University  
School of Medicine  
Psychiatry & Behavioral Neuroscience  
Host: Matthew Rodeheffer, PhD

June 4, 2013



**Ling Qi, PhD**  
Assistant Professor Cornell University  
Host: Xiaoyong Yang, PhD

October 25, 2012

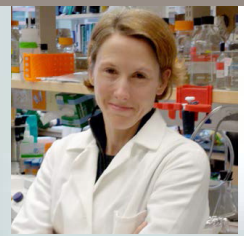


**Randy S. Levinson, PhD**  
Senior Editor, Nature Medicine  
New York  
Host: Tamas Horvath, DVM, PhD

## ICSNM Mission

The Program in Integrative Cell Signaling and Neurobiology of Metabolism (ICSNM) provides a forum for investigators to collaborate and integrate their research efforts in the areas of cell signaling in metabolic disease and neurobiology of metabolism. The program promotes an interdisciplinary approach that seeks to synergize the expertise of investigators with backgrounds in various physiological systems that control metabolism. The Program's objective is to provide both a fundamental understanding of the molecular basis for the control of metabolic processes and how these metabolic systems communicate with each other to maintain metabolic homeostasis. The long-term goal of the Program will ultimately be to leverage this information to improve human health.

April 23, 2013



**Diane Fingar, PhD**  
Associate Professor  
University of Michigan  
Cell & Developmental Biology  
Host: Sabrina Diano, PhD

November 6, 2012



**Lora K. Heisler, PhD**  
Lecturer, Department of Pharmacology  
Wellcome Trust Senior Fellow in Basic  
Biomedical Science  
University of Cambridge  
Host: Tamas Horvath, DVM, PhD

March 5, 2013



**Mauricio Delgado, PhD**  
Associate Professor  
Department of Psychology  
Rutgers University  
Host: Ifat Levy, PhD

December 4, 2012



**Catherine Kotz, PhD**  
PAdjunct Professor  
Departments of Geriatric Research,  
Education and Clinical Care (GRECC)  
Food Science and Nutrition  
Minnesota Obesity Center  
Host: Anton Bennett, PhD

February 5, 2013



**Matthew Hirschey, PhD**  
Assistant Professor  
Department of Medicine  
Department of Pharmacology & Cancer Biology  
Sarah W. Stedman Nutrition and Metabolism  
Center Duke University Medical Center  
Host: Xiaoyong Yang, PhD

January 8, 2013



**Deborah Clegg, PhD**  
Associate Professor  
Internal Medicine, Clinical Nutrition  
Graduate Program: Integrative Biology  
UT Southwestern Medical Center  
Host: Sabrina Diano, PhD